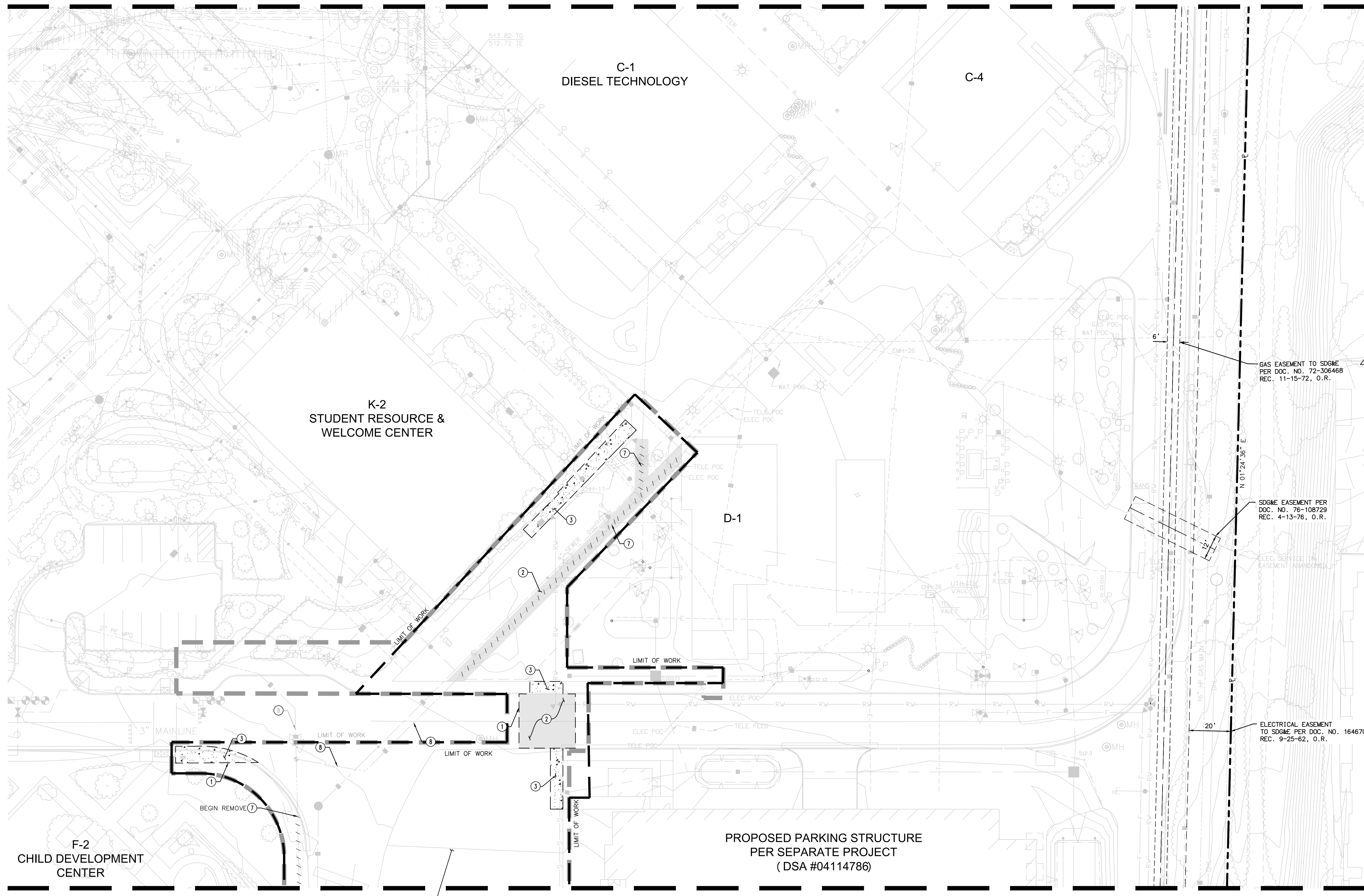


MATCHLINE - SEE SHEET C-1.4



**DEMOLITION LEGEND**

ITEM	DETAIL/OR REGIONAL STANDARD DRAWING	SYMBOL
EXISTING CONTOUR		260
AC PAVEMENT/BASE TO DEMOLISH		[Symbol]
CONCRETE PAVEMENT TO DEMOLISH		[Symbol]
BUILDING/STRUCTURE TO REMOVE		[Symbol]
EX BUILDING		[Symbol]
LIMIT OF WORK (OLD) FOR INFRASTRUCTURE AND SOUTH CAMPUS DEVELOPMENT PROJECT		[Symbol]
UTILITY TO BE REMOVED		[Symbol]
SAWCUT LINE		[Symbol]
CAP EX UTILITY LINE		[Symbol]
EX FIRE SERVICE		[Symbol]
EX WATER SERVICE		[Symbol]
EX SEWER SERVICE		[Symbol]
EX STORM DRAIN LINE		[Symbol]
EX GAS SERVICE		[Symbol]
EX TELECOMMUNICATION SERVICE		[Symbol]
EX ELECTRIC LINE		[Symbol]
LIMIT OF WORK		[Symbol]

- DEMOLITION NOTES**
- ① SAWCUT LINE.
  - ② DEMO AC PAVEMENT.
  - ③ DEMO CONCRETE PAVEMENT.
  - ④ DEMO EX GAS LINE.
  - ⑤ ABANDON EX GAS LINE.

1 CONTRACTOR TO REMOVE TOP 3" OF SOIL FOR INSTALLATION OF CRUSHED GRANITE ROCK

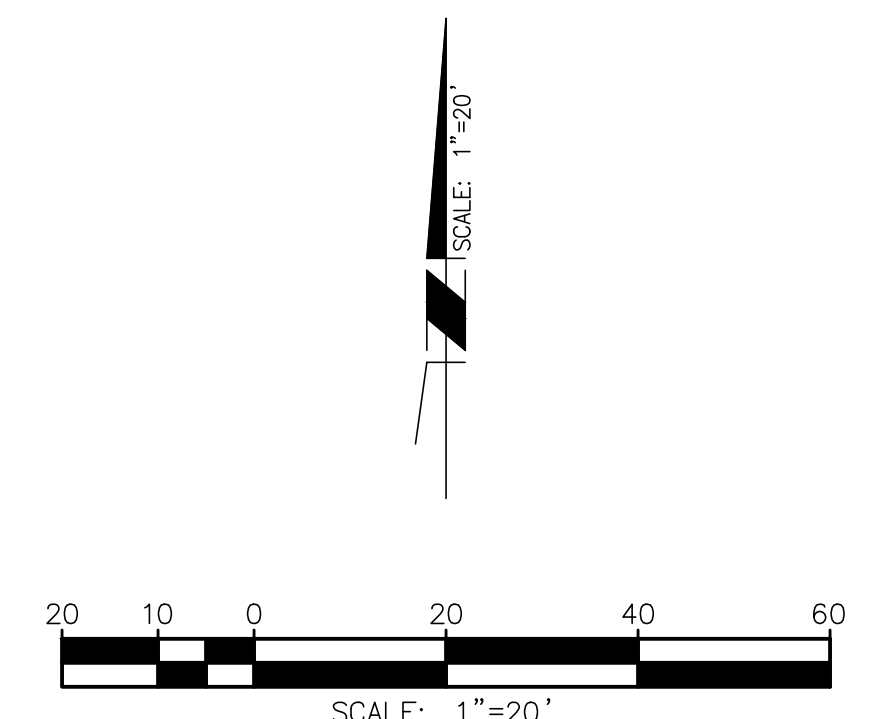
**SPECIAL NOTES FOR MIRAMAR COLLEGE:**  
THE FOLLOWING NOTES PROVIDED BY THE DISTRICT FOR CONTRACTOR REFERENCE:

**CAUTION:**  
1. THE CONTRACTOR MAY ENCOUNTER OLD MILITARY ORDNANCE. THE CONTRACTOR SHALL NOTIFY THE DISTRICT IMMEDIATELY IF THEY ENCOUNTER ANY ORDNANCE.

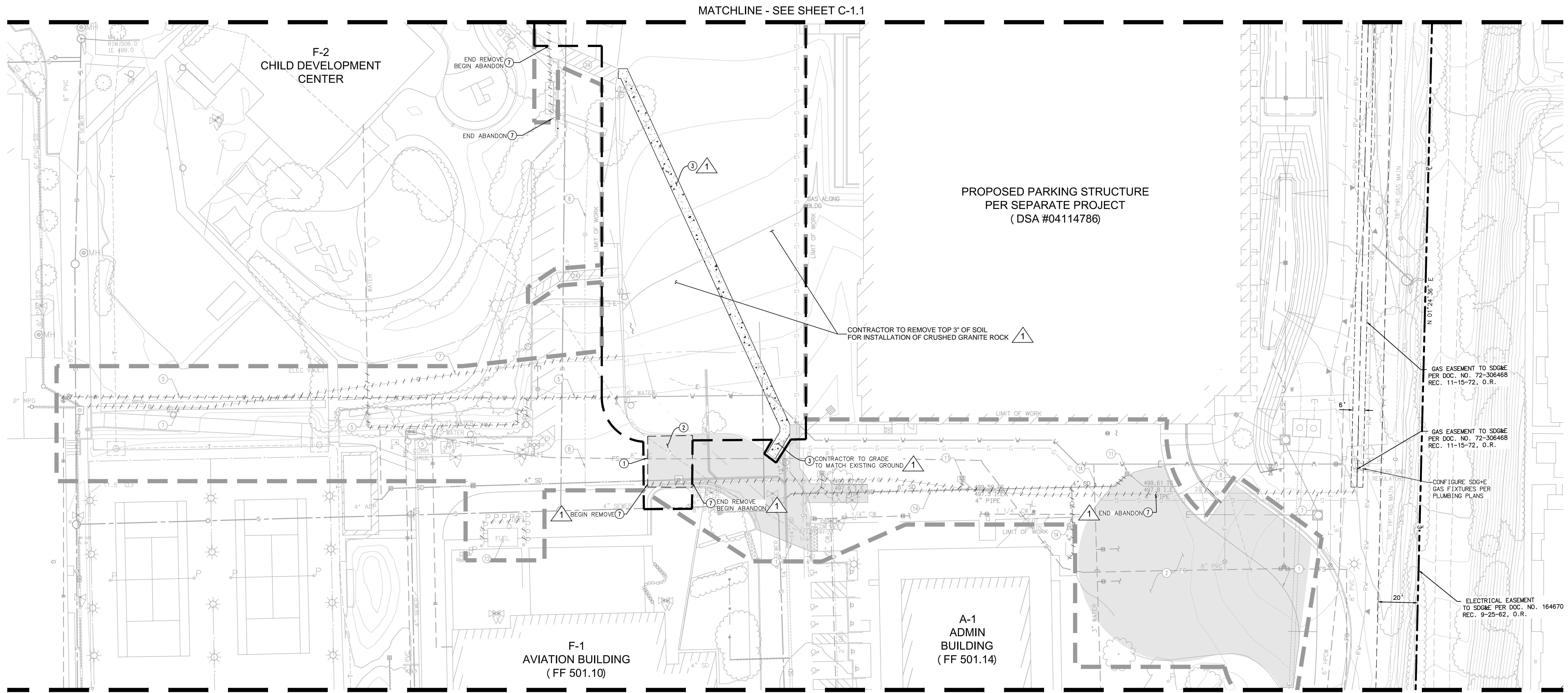
2. GEOTECHNICAL INVESTIGATIONS FOR THE SURROUNDING IMPROVEMENTS DESCRIBE THE UNDERLYING SOILS AS SANDY CLAY OVER HIGHLY CEMENTED GRAVEL AND COBBLE CONGLOMERATE (LINDA VISTA FORMATION AND STADIUM CONGLOMERATE). NO GROUNDWATER WAS ENCOUNTERED. TRENCHING INTO THE LINDA VISTA FORMATION AND STADIUM CONGLOMERATE WILL BE DIFFICULT AND MAY REQUIRE HEAVY EQUIPMENT.

**Michael Baker INTERNATIONAL**  
9755 Clairemont Mesa Blvd.  
San Diego, CA 92124  
Phone: (858) 614-5000  
MBAKERINTL.COM

	APPROVED BY	APPROVED BY	DRAWN MAG	<b>DEMOLITION PLAN</b>  MIRAMAR COLLEGE INFRASTRUCTURE AND SITE DEVELOPMENT PHASE II ( SOUTH ) SCOPE "B"  SAN DIEGO COMMUNITY COLLEGE DISTRICT		DATE AUGUST 3, 2017
	ENGINEER OF WORK JAY A. SULLIVAN Exp. 06-30-19	D.S.A.	DISTRICT ARCHITECT			CHECKED JHS  REVISION 1



H:\PDATA\130852 MIRAMAR\_SCOPE\_B\CADD\LAND\130852-DM-02-B.DWG PITTMAN, KAYSIE\_3/11/2019 8:03 AM



**DEMOLITION NOTES**

- ① SAWCUT LINE.
- ② DEMO AC PAVEMENT.
- ③ DEMO CONCRETE PAVEMENT.
- ④ DEMO WATER EX LINE.
- ⑤ DEMO EX GAS LINE.
- ⑥ ABANDON EX GAS LINE.
- ⑦ DEMO EX CATCH BASIN.
- ⑧ DEMO EX CONCRETE PAD AND SURROUNDING BOLLARDS.
- ⑨ DEMO EX STORM DRAIN LINE.
- ⑩ REMOVE EX CROSSWALK STRIPINGS.

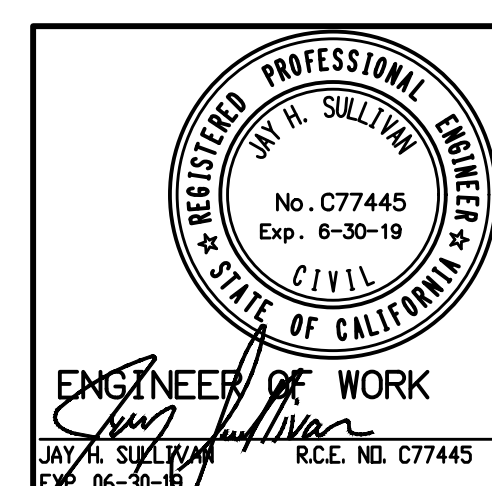
NOTE:  
SEE SHEET C-1.1 FOR DEMO LEGEND.

**SPECIAL NOTES FOR MIRAMAR COLLEGE:**  
THE FOLLOWING NOTES PROVIDED BY THE DISTRICT FOR CONTRACTOR REFERENCE:

**CAUTION:**  
1. THE CONTRACTOR MAY ENCOUNTER OLD MILITARY ORDNANCE. THE CONTRACTOR SHALL NOTIFY THE DISTRICT IMMEDIATELY IF THEY ENCOUNTER ANY ORDNANCE.

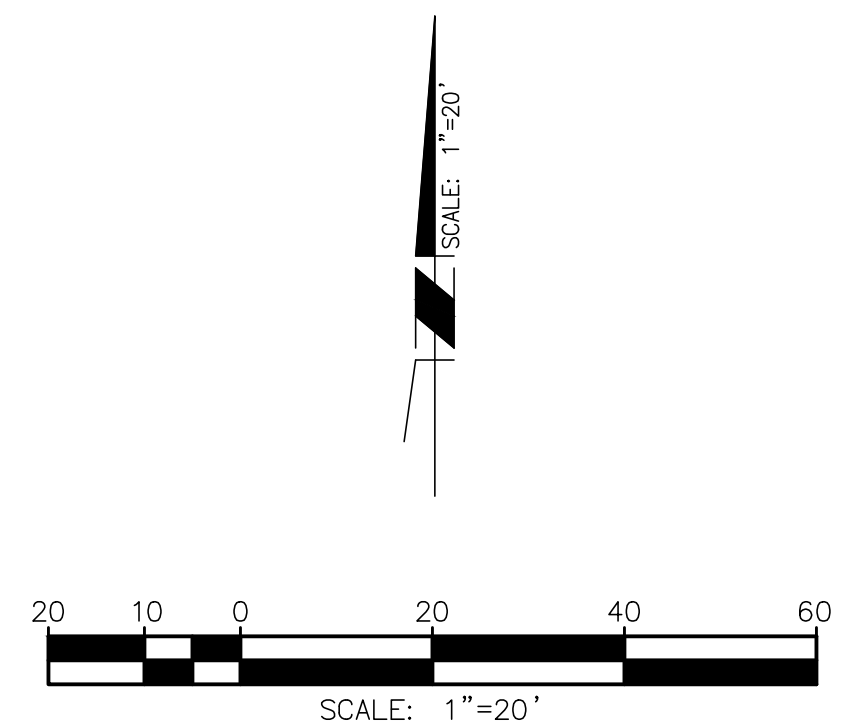
2. GEOTECHNICAL INVESTIGATIONS FOR THE SURROUNDING IMPROVEMENTS DESCRIBE THE UNDERLYING SOILS AS SANDY CLAY OVER HIGHLY CEMENTED GRAVEL AND COBBLE CONGLOMERATE (LINDA VISTA FORMATION AND STADIUM CONGLOMERATE). NO GROUNDWATER WAS ENCOUNTERED. TRENCHING INTO THE LINDA VISTA FORMATION AND STADIUM CONGLOMERATE WILL BE DIFFICULT AND MAY REQUIRE HEAVY EQUIPMENT.

**Michael Baker INTERNATIONAL**  
 9755 Clairemont Mesa Blvd.  
 San Diego, CA 92124  
 Phone: (858) 614-5000  
 MBAKERINTL.COM



APPROVED BY	APPROVED BY

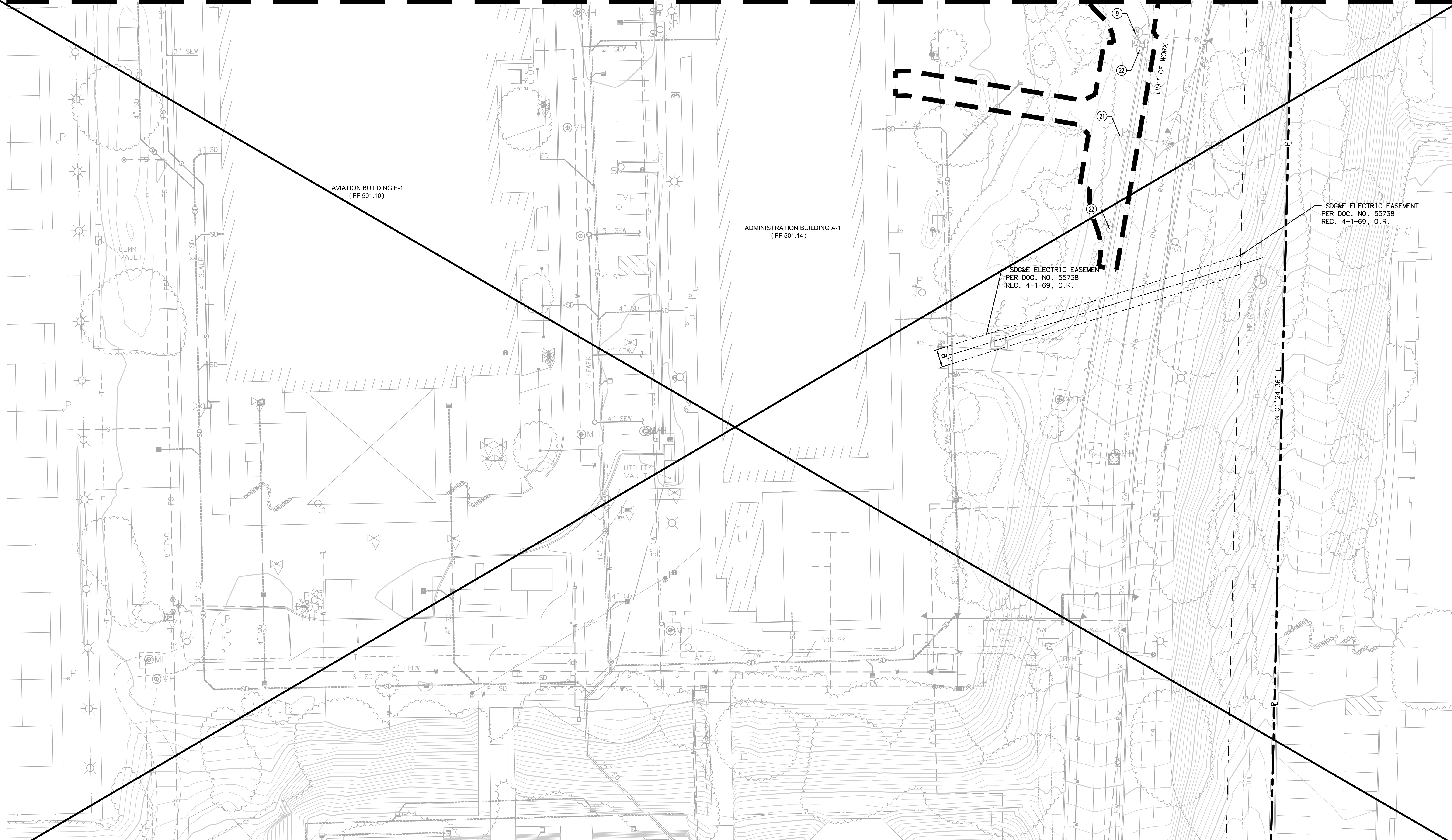
DRAWN MAG CHECKED JHS REVISION 1	<b>DEMOLITION PLAN</b> <b>MIRAMAR COLLEGE</b> <b>INFRASTRUCTURE AND SITE</b> <b>DEVELOPMENT PHASE II ( SOUTH )</b> <b>SCOPE "B"</b> SAN DIEGO COMMUNITY COLLEGE DISTRICT	DATE AUGUST 3, 2017 SHEET 4 C-1.2 OF 46
---	---	---



2017-09-12 - 100% CONSTRUCTION DOCUMENTS - SCOPE "B"

NOT IN SCOPE 

MATCHLINE - SEE SHEET C-1.2



AVIATION BUILDING F-1  
(FF 501.10)

ADMINISTRATION BUILDING A-1  
(FF 501.14)

SDG&E ELECTRIC EASEMENT  
PER DOC. NO. 55738  
REC. 4-1-69, O.R.

SDG&E ELECTRIC EASEMENT  
PER DOC. NO. 55738  
REC. 4-1-69, O.R.

**DEMOLITION NOTES**

- ① SAWCUT LINE.
- ② DEMO AC PAVEMENT.
- ③ DEMO CONCRETE PAVEMENT.
- ④ CLEAR AND GRUB.
- ⑤ DEMO EX FIRE HYDRANT.
- ⑬ RELOCATED EX EXERCISE WALL.
- ⑭ DEMO EX LIGHT POLE AND POST.
- ⑮ DEMO EX BOLLARD.
- ⑯ REMOVE AND SALVAGE EX SIGN.

NOTE:  
SEE SHEET C-1.1 FOR DEMO LEGEND.

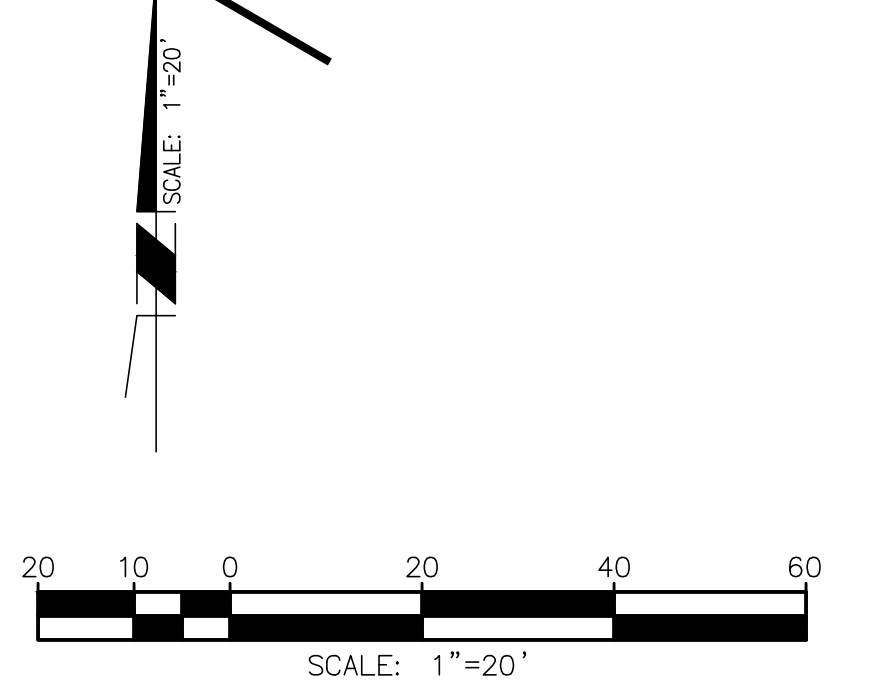
**SPECIAL NOTES FOR MIRAMAR COLLEGE:**

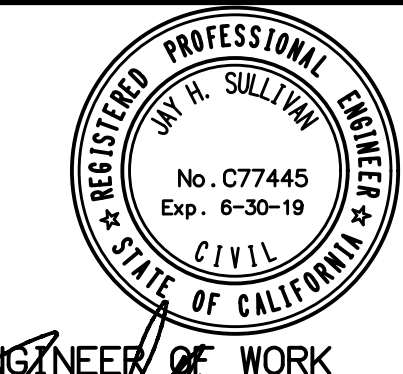
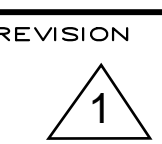
THE FOLLOWING NOTES PROVIDED BY THE DISTRICT FOR CONTRACTOR REFERENCE:

**CAUTION:**  
1. THE CONTRACTOR MAY ENCOUNTER OLD MILITARY ORDNANCE. THE CONTRACTOR SHALL NOTIFY THE DISTRICT IMMEDIATELY IF THEY ENCOUNTER ANY ORDNANCE.

2. GEOTECHNICAL INVESTIGATIONS FOR THE SURROUNDING IMPROVEMENTS DESCRIBE THE UNDERLYING SOILS AS SANDY CLAY OVER HIGHLY CEMENTED GRAVEL AND COBBLE CONGLOMERATE (LINDA VISTA FORMATION AND STADIUM CONGLOMERATE). NO GROUNDWATER WAS ENCOUNTERED. TRENCHING INTO THE LINDA VISTA FORMATION AND STADIUM CONGLOMERATE WILL BE DIFFICULT AND MAY REQUIRE HEAVY EQUIPMENT.

**Michael Baker INTERNATIONAL**  
 9755 Clairemont Mesa Blvd.  
 San Diego, CA 92124  
 Phone: (858) 614-5000  
 MBAKERINTL.COM

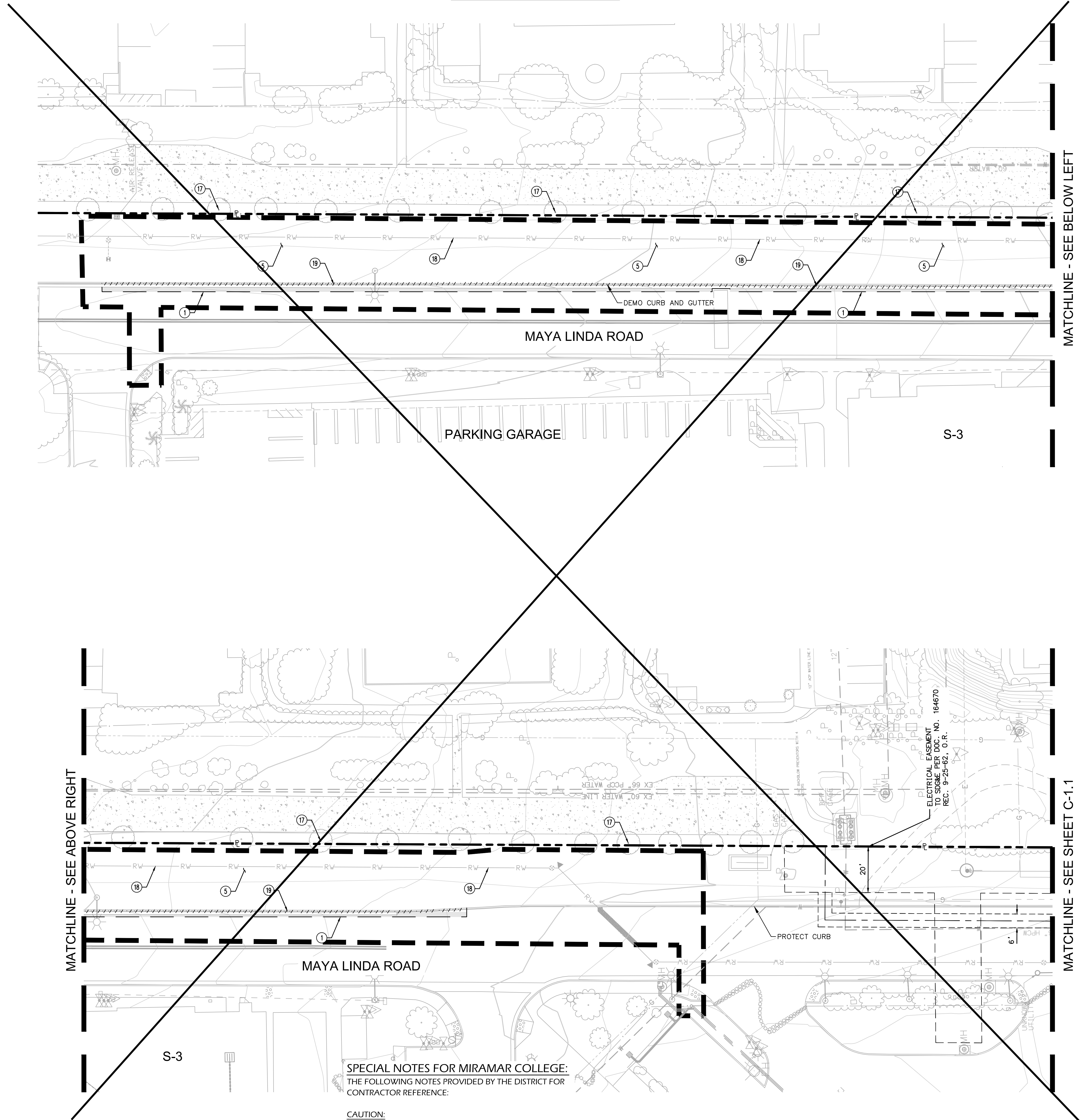


 ENGINEER OF WORK JAY A. SULLIVAN Exp. 06-30-19	APPROVED BY	APPROVED BY	DRAWN MAG	<b>DEMOLITION PLAN</b>  MIRAMAR COLLEGE INFRASTRUCTURE AND SITE DEVELOPMENT PHASE II ( SOUTH ) SCOPE "B"  SAN DIEGO COMMUNITY COLLEGE DISTRICT		DATE SEPTEMBER 12, 2017
			CHECKED JHS			SHEET <b>5</b>
			REVISION 		SHEET <b>C-1.3</b>	OF <b>46</b>

H:\PDATA\130852\CADD\LAND\DLV\SCOPE\_B\130852-DM-03-B.DWG GONZALEZ, MIGUEL 8/28/2017 10:42 AM

2017-09-12 - 100% CONSTRUCTION DOCUMENTS - SCOPE "B"

NOT IN SCOPE 



H:\PDATA\130652\CADD\LAND\DLV\SCOPE\_B\130652-DM-05-B.DWG GONZALEZ, MIGUEL 8/28/2017 10:44 AM

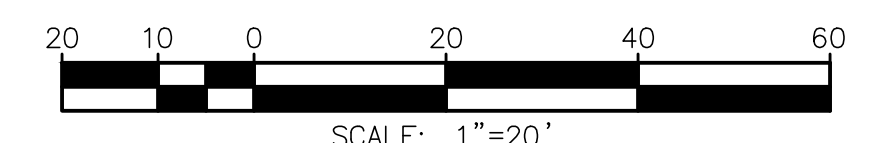
MATCHLINE - SEE ABOVE RIGHT

MATCHLINE - SEE SHEET C-1.1

- DEMOLITION NOTES**
- ① SAWCUT LINE.
  - ② DEMO WATER EX LINE.
  - ③ PROTECT IN PLACE ALL TREES.
  - ④ PROTECT IN PLACE RECLAIMED WATER LINE.
  - ⑤ DEMO EX CURB AND GUTTER.

NOTE:  
SEE SHEET C-1.1 FOR DEMO LEGEND.

SCALE: 1"=20'





**SPECIAL NOTES FOR MIRAMAR COLLEGE:**  
THE FOLLOWING NOTES PROVIDED BY THE DISTRICT FOR CONTRACTOR REFERENCE:

**CAUTION:**  
1. THE CONTRACTOR MAY ENCOUNTER OLD MILITARY ORDNANCE. THE CONTRACTOR SHALL NOTIFY THE DISTRICT IMMEDIATELY IF THEY ENCOUNTER ANY ORDNANCE.

2. GEOTECHNICAL INVESTIGATIONS FOR THE SURROUNDING IMPROVEMENTS DESCRIBE THE UNDERLYING SOILS AS SANDY CLAY OVER HIGHLY CEMENTED GRAVEL AND COBBLE CONGLOMERATE (LINDA VISTA FORMATION AND STADIUM CONGLOMERATE). NO GROUNDWATER WAS ENCOUNTERED. TRENCHING INTO THE LINDA VISTA FORMATION AND STADIUM CONGLOMERATE WILL BE DIFFICULT AND MAY REQUIRE HEAVY EQUIPMENT.

**Michael Baker INTERNATIONAL**  
9755 Clairemont Mesa Blvd.  
San Diego, CA 92124  
Phone: (858) 614-5000  
MBAKERINTL.COM

 <b>ENGINEER OF WORK</b> JAY A. SULLIVAN No. C77445 Exp. 6-30-19 STATE OF CALIFORNIA EMP. 06-30-R	APPROVED BY	APPROVED BY	DRAWN MAG	<b>DEMOLITION PLAN</b>  MIRAMAR COLLEGE INFRASTRUCTURE AND SITE DEVELOPMENT PHASE II ( SOUTH ) SCOPE "B"  SAN DIEGO COMMUNITY COLLEGE DISTRICT		DATE SEPTEMBER 12, 2017
			CHECKED JHS			SHEET <b>6</b>
				REVISION 	C-1.4	OF <b>46</b>

2017-09-12 - 100% CONSTRUCTION DOCUMENTS - SCOPE "B"